

OUR SCHOOL

BELIEFS:

- BE SAFE
- BE FAIR
- BE A LEARNER

SCHOOL

TIMES:

Morning play starts at 8:45am. NO supervision is provided before this time.

Lessons start at 9:15am.

First break 11:30-12:15pm.

Second break 1:45-2:15pm.

School finishes at 3:15pm.

SCHOOL

CANTEEN:

Our school canteen is operated by our P&C.

The canteen operates Monday to Thursday and opens at 9am.

Classes And Teachers Confirmed

We have now finalised classes at our school.

Our preschool operates 2 programs per week.

Teacher: Donna Deehan.

School Learning Support Officer (SLSO): Ron Case.

Our Early Intervention class is taught by Anne Gilchrist and the SLSO is Kim Hammond.

In our mainstream we have five classes. Kindergarten (KI) is taught by Joanne Inglis. SLSOs: Dave Rushbrook and Sharon Daaboul. 1/2C is taught by Teegan Collins and the SLSOs are Ann Rofe and Bob Lee. Mrs Theo teach-

es 2/3T and the SLSO is Kerrie Currie. 3-6B is taught by Bec Somerville (Mon-Thurs) and Jo Madden on Friday. Alana Guillier is the SLSO. Our final class in mainstream is 3-6P. Paul Stevens is the teacher and Julie Blanch is the SLSO. Kay Taylor supports students with their learning in Mainstream and David Amidy teachers Reading Recovery and Culture. Our librarian is Neroli Johnson. Karen Cochrane and Jodi Tisdell support our Aboriginal students and assist with learning across the

school.

In the Support Unit we have five classes. SCB is taught by Alex Beckton and Judy Clarke is the SLSO. In SCG, the SLSO is Sharon Prior and the teacher is Jodi Goodwin. SCR is taught by Willie Richardson and the SLSO is Jennie Cunningham and Kim Hammond who share a position. SCS is taught by Jo Stace with Michelle Cole as SLSO. SCW is taught by Alex White and the SLSO is Amanda Patterson. Support teachers in the SU are Lauren Waugh and Bron Pensini.

Enclosed Shoes At School

Just a reminder that students should not be wearing thongs, flip flops or sandals to school. For safety reasons, we expect all students to be wearing enclosed shoes, like those pictured here, every day

at school. We also expect all students to be in school uniform every day. Please contact the school if your child will be out of uniform. Uniforms can be purchased from our canteen.



Be Safe



Be Fair



Be a Learner



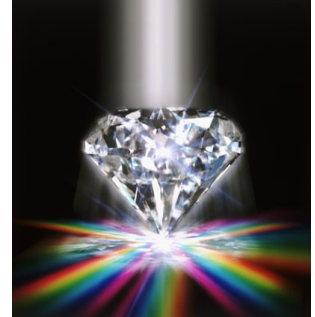
“Actions speak louder than words. Every Student at MGPS can follow our beliefs and be a leader.”

Our Students Are Precious Gems

This year we have introduced a new student reward program across the school. This program is one part of our new wellbeing policy. Many of our rewards are based on students following our school beliefs. We have three school beliefs: Be Safe. Be Fair and Be A Learner. Class teachers track

how each student in their care is travelling in terms of ‘doing the right thing at school’. As students receive positive reinforcement for their good behaviour, they have the opportunity to move through levels and receive certificates and awards. We want to catch our students being good and we believe

that all students should be acknowledged when they do the right thing at school.



New School Attendance Policy

The Department of Education and Communities has changed its Attendance Policy. As of this year, holidays taken during school terms will now be included as absences.

A Certificate of Exemption can no longer be granted for the purpose

of taking a holiday. Families are encouraged to holiday or travel during school vacations.

If travel outside of vacations periods is necessary, parents will need to complete an Application for Extended Leave - Travel, at the school office for the approval

of the principal.

If the application is approved your child’s absence will be marked as leave. If you have any questions regarding the new DEC procedures. Please ask to speak with your child’s Assistant Principal (Mrs Inglis or Mrs Theo).

Attendance Promo Starts Soon

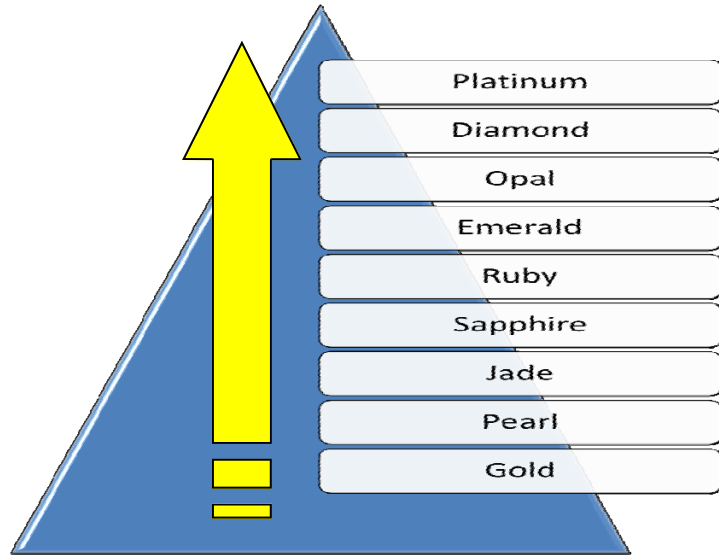
In Term 2 we will be holding attendance promotions in our mainstream and support unit departments. There will be one major prize in the support unit, mainstream infants and mainstream primary. So

three prizes in total. To go into the draw, students will need to have an average attendance pattern of 90% or better over the whole term. We want students to be at school everyday. Students who arrive late,

go home early or get sent home for misbehaviour will miss out. We believe that students with outstanding attendance at school should be rewarded and have the chance of winning a great prize.

The Precious Gems Positive Levels

The diagram opposite shows you the positive levels students can achieve when they do the right thing at our school. We already have some outstanding students at PEARL level. Special prizes are awarded at JADE, RUBY, OPAL and PLATINUM levels. We proudly reward positive students behaviour at MGPS!



“ Whole school assemblies are about bringing our whole school together to celebrate student success.”

All Students Start At Gold Level

As part of our Precious Gems behaviour program, all students start at ‘GOLD’ level. From gold level, if students keep doing the right thing, they will move up the precious gems levels towards the ultimate prize, which is ‘PLATINUM’ level. Twice a year in Term 2 and

4 we will hold fun days for all students who are gold level or better. Students who choose to engage in inappropriate behaviour move from gold level to Levels 1-4. These are negative levels where we will work with parents to support students to do the

right thing. Gold level and above is where students should aim to be with our ‘precious gems’ program.



We Reward Students For Positive Behaviour

Just as there are consequences for inappropriate behaviour, we believe that students should also receive positive reinforcement in the form of rewards when they do the right

thing. Over the course of the year, you will notice that we are catching students being ‘good’ and rewarding this positive behaviour in many different ways.





MANNING GARDENS PUBLIC SCHOOL

Mudford Street
TAREE NSW 2430
Phone: 6552-6333

Together We Grow

Manning Gardens PS is a vibrant and dynamic school, catering for students from Preschool to Year 6. We have a Support Unit and Early Intervention class for children who require specialised, additional support. Staff work tirelessly to create a caring and supportive environment where children feel safe and can develop a lifelong love of learning.



We Catch Students Being Good

Every day teachers are trying to catch our students being good at school. When we catch our students being good, they may receive a golden gotcha, as a positive consequence. Once a student has received 10 golden gotchas, they move up one of our Precious Gems levels. Class teachers in the main-stream can issue up to

10 golden gotchas each day. Class teachers in the support unit can award up to 4 golden gotchas each day. This is just another strategy we are employing to encourage positive behaviour and compliance with our school beliefs. Already we have students in all our classes who have achieved PEARL level, the first level above GOLD lev-

el. As students move up our Precious Gems levels, they receive special certificates and badges at our Whole School Assembly. Ask your children, did you get a golden gotcha today?

